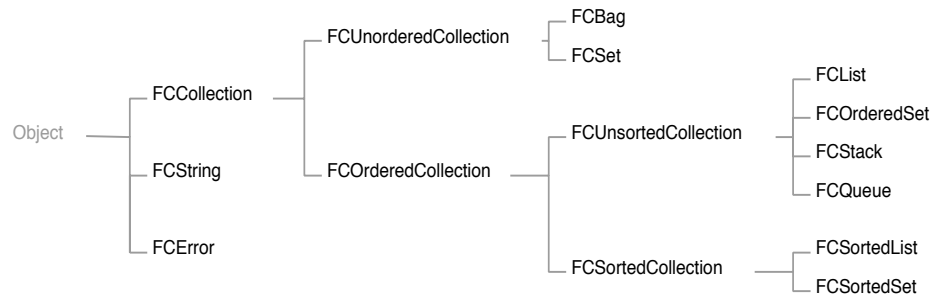


Lighthouse Design's Foundation Classes

Class Inheritance Hierarchy:



The three main classes in the Foundation library include: FCCollection, FCString and FCErrror:

FCCollection

FCCollection is an abstract superclass for a family of collection classes, including sets, bag, lists stacks and queues. Listed below are the instantiable FCCollection subclasses, their features, and a representative sample of such a collection.

Class	Ordered	Sorted	Unique	Example representation
FCBag	No	No	No	A grocery bag, where being able to quickly add and remove objects multiple times is most important, and the order doesn't matter.
FCSet	No	No	Yes	Customers in your customer list—no individual is represented more than once, and there is not necessarily a notion of order.
FCList	Yes	No	No	The words in this document—some appear multiple times, and there is a need for a specific order.
FCOrderedSet	Yes	No	Yes	Subviews for a view, which are required to be unique and maintain a sense of order (which is on top, which is on the bottom).
FCStack	Yes	No	No	A last in, first out (LIFO) structure, like a stack of plates—add plates to the top, remove them from the top.
FCQueue	Yes	No	No	A first in, first out (FIFO) structure, like a queue at the butcher shop—people are added at the rear, and leave from the front.
FCSortedList	Yes	Yes	No	All words in this document, sorted alphabetically.
FCSortedSet	Yes	Yes	Yes	Unique words in this document, sorted alphabetically.

FCString

FCString takes the drudgery out of dealing with character strings in C by providing a convenient way to create and manipulate them, similar to standard C, but without the usual concern over memory allocation.

FCErrror

FCErrror offers an object-oriented wrapper for exception handling—offering a simple and efficient way to announce errors to the user, while providing developers with the flexibility to easily change how a given error condition should be handled.

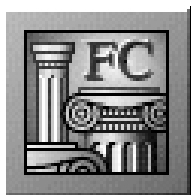
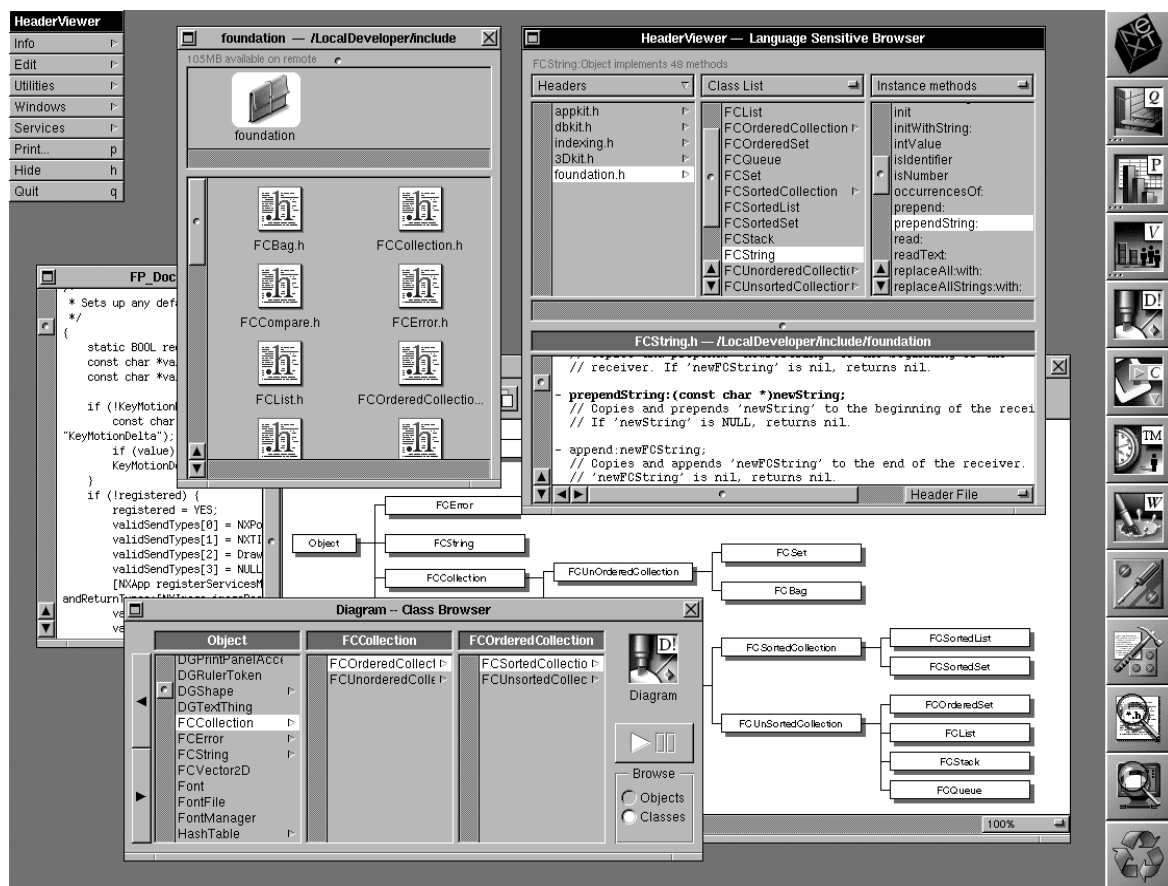
PRODUCT AVAILABILITY:

- Available now for NEXTSTEP 3.1 or later
- Available in both binary and source code form
- Includes complete and standardized reference manual
- Technical support contracts are available
- Site license and runtime licensing available

FOR MORE INFORMATION:

- Call 1-800-366-2279 or +1-415-570-7736
- Send electronic mail to foundation@lighthouse.com

FOUNDATION



Lighthouse Design's Foundation Classes™ offer corporate developers an indispensable suite of industrial-strength software components. Time-tested in Lighthouse Design's own commercial applications, as well as by independent consultants, the Foundation Classes provide a safe and reliable opportunity to save development time and money in deploying in-house mission-critical applications.

For corporate developers transitioning from mainframes or Microsoft® Windows™ to object-oriented programming, the Foundation Classes offer an immediate return on that investment: reusability of well-tested code. The Classes ship in every Lighthouse Design commercial application—and are therefore among the safest ObjectWare available for NEXTSTEP®.

Leveraging years of Lighthouse Design's experience and quality assurance, the Foundation Classes provide a well-documented library of Objective-C data structures, string handling and error classes.

The Foundation Classes are appropriate for a wide variety of development tasks and are in use by object-oriented developers in the financial services, telecommunications, retail, health care, and defense industries.

If you're looking to ship custom applications on-time and on-budget, the Foundation Classes are an invaluable addition to your arsenal of developer tools.

For corporate developers building mission-critical, custom applications, the Foundation Classes are an invaluable addition to your arsenal of developer tools—helping to ensure on-time and on-budget deployment.

Lighthouse
DESIGN LTD