

## FEATURES AND BENEFITS

### FUNCTIONS AND FORMULAS

- Plain English formulas ("Market Penetration = Total Units / Total Market") make creating, modifying and maintaining spreadsheets fast and easy
- Support for inter-sheet linking allows cells in one worksheet to reference other worksheets and views
- Full support for unlimited Undo and Redo of all spreadsheet operations
- Includes an extensive array of sophisticated mathematical and accounting functions, including libraries conveniently organized by:
  - Mathematics, Statistics
  - Accounting
  - Logic
  - Time/Date
  - Selection/Lookup
  - Formatting/Grouping

### DOCUMENTS, VIEWS AND WORKSHEETS

- Unlimited spreadsheet size
- Unlimited number of formulas
- Information dimensions allow spreadsheet data to be described, managed and manipulated in categories or parcels—no longer are users restricted to frustrating rows and columns
- Flexible file tab interface for 'Z' axis allows data dimensions to be navigated and browsed with a simple mouse click
- Support for unlimited number of matrix dimensions allows you to view your spreadsheets in any number of differing perspectives
- Dimensions can be swapped or reorganized by simply dragging and dropping—formulas are automatically maintained
- Support for an unlimited number of differing spreadsheet views and worksheets allows financial models to be compartmentalized into easily manageable and coordinated parts—consolidations are a simple point and click away
- Updates made to one view are reflected throughout the document, and are managed through a convenient view browser (just like Lighthouse Design's Concurrence™ presentations)

### USER INTERFACE

- Button ribbon provides fast and convenient access to inspectors, panels and frequently accessed formatting commands
- Drag and drop linking allows spreadsheet data to be dynamically associated with other applications (providing full support for NEXTSTEP 3.0 Object Links)
- Cell locking provides editorial control over spreadsheet content

### GRAPHICS

- Full support for *real-time rotation* of 3-D chart types—just grab a rotation handle, and spin your data set for maximum impact and clarity
- Inspector panels provide easy access to controls over chart color, label and legend type and display, axis scaling and markup, and much more
- Full support for a wide variety of graphics, as well as copy/paste of spreadsheet area as Encapsulated PostScript (EPS) or TIFF graphics

### FORMATTING AND PRINTING

- Fine control over data types and "smart cells" take the tedium out of formatting spreadsheet cells and categories
- Full control over spreadsheet text, grid, line weight and color

### FILE FORMAT

- ASCII (plain text) file format allows your custom scripts and applications to both read and write Quantrix spreadsheet files.
- Full compatibility with Lotus Improv .imx and 1-2-3, with Microsoft® Excel 4.0 and Lotus Improv for Windows™ coming soon
- Import from and Export to user-defined text formats

### APPLICATION PROGRAMMER'S INTERFACE (API)

- Object-oriented API allows developers of mission-critical NEXTSTEP applications to leverage Quantrix's calculation and display engine—eliminating the need to write or create custom reporting/spreadsheet views and objects
- Full programmatic access to all data entry, formula creation and editing, spreadsheet formatting, output, and reporting

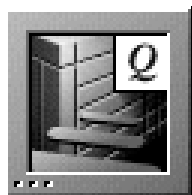
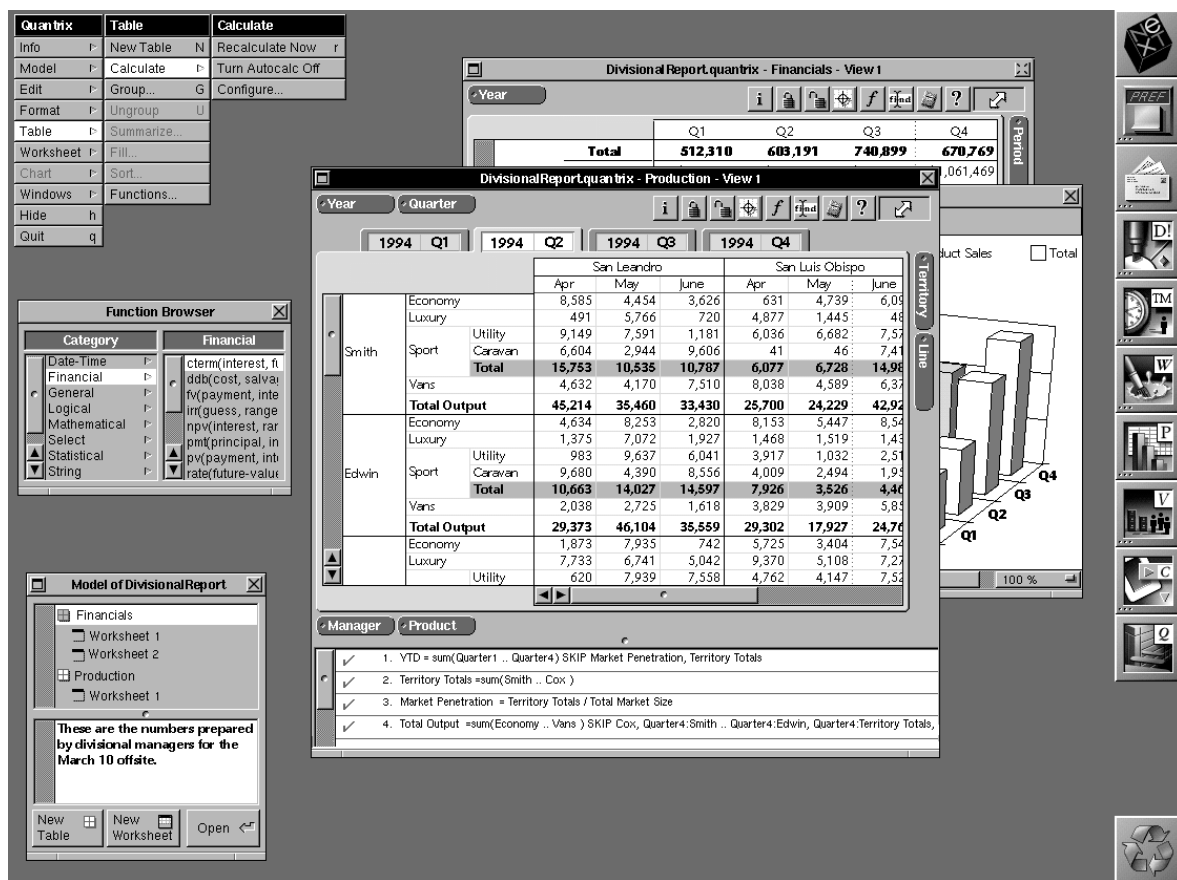
### PRODUCT AVAILABILITY

- Available in Q3 '94 for NEXTSTEP 3.1 or later
- Available in Q3 '94 for Hewlett-Packard's PA-RISC workstations
- Available in Q4 '94 for Sun Microsystems' OpenStep™ Architecture
- Includes complete user manual, and on-line help and documentation
- Technical support and training contracts are available
- Site license and runtime licensing available

### FOR MORE INFORMATION

- Call 1-800-366-2279 or +1-415-570-7736
- Send electronic mail to [quantrix@lighthouse.com](mailto:quantrix@lighthouse.com)
- Over the internet, <http://www.lighthouse.com/>

# QUANTRIX



**Lighthouse Design's Quantrix™** is a powerful new multi-dimensional spreadsheet solution for NEXTSTEP®. For enterprises driven by spreadsheets, from simple budgets to complex forecasts and financial planning, Quantrix offers a truly remarkable advantage.

With plain English formulas, Quantrix eliminates cryptic cell references that characterize most traditional spreadsheets (e.g., "Revenues = Units Sold \* Selling Price" vs. "C3:C15 = A1:A15 \* \$B\$3"). Formulas are automatically maintained across multiple spreadsheets, allowing you to modify and reorganize your data without worry. And plain English formulas make Quantrix documents more legible—to you and to others who read them.

An innovative graphical approach to information decomposition allows you to define information in terms of information categories—which can be moved around or reorganized by simply dragging and dropping. Now you can turn your 1994 budget into a five year plan, or a single stock analysis into a portfolio model with a simple keystroke, and no additional formulas!

With its comprehensive and well-documented application programmer's interface (API), Quantrix is an indispensable addition to your NEXTSTEP desktop, especially for developers of custom applications. Now you can use a pre-written spreadsheet and calculation object instead of writing your own!

With all of this functionality, plus compatibility with Lotus Improv™ and 1-2-3®, Quantrix is one of the most significant spreadsheets available today!

*Introducing Quantrix – the new multi-dimensional spreadsheet solution from Lighthouse Design. With its extensive compatibility, plain English formulas, comprehensive API, and multiple views, Quantrix is one of the most powerful spreadsheets available today.*

*Lighthouse*  
DESIGN LTD