

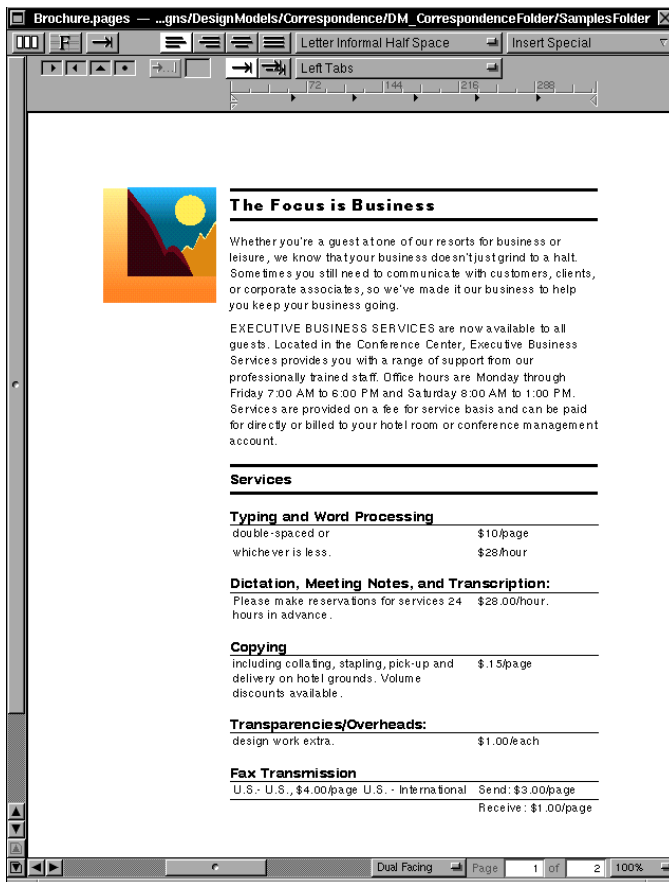


ObjectBased word-processing for NEXTSTEP

Powerful word-processing

Pages by Pages™ is an ObjectBased™ word-processing solution that can range from a single-user personal word processor, to a complete enterprise-wide document processor. As an enterprise-wide document processor, Pages can be used throughout an entire organization to produce consistently effective documents.

Pages allows you to create any type of document (reports, memos, letters, presentations, and so on) and apply effective design principals with little effort.



Pages' technology takes word-processing, desktop publishing and pre-sentations a step further – seamlessly integrating them into an easy-to-use and extremely powerful package.

An additional Pages API gives developers programmatic access to Pages' remote objects and turns the application into a back-end report generator – letting users create reports that integrate messages and data from their custom applications.

At Pages Software Inc, it's not what we do, it's how we do it. And how we do it will save time, increase productivity, integrate with your custom applications, and result in a consistent look for every document your company produces.

Pages 1.5: a scalable application

Like many traditional word processors, Pages is loaded with features and page styling capabilities. It has everything you'd expect to see in a word-processor, making it an appealing product for end-users.



In addition to our standard word-processing features, we've incorporated many high-end capabilities that can scale the application upward to satisfy enterprise-wide corporate document processing needs.

Feature set supports ease-of-use

Our second major release, Pages 1.5, incorporates user feedback and recognizes user's needs for both ease-of-use and productivity.

Pages includes features such as a Speed Bar, footnotes, tables, tabs, a document management system, multiple columns, and Design Models, as well as a suite of templates for your faxes, memos, letters, and reports.

At Pages Software, we realize NEXTSTEP® customers are making a transition from more traditional applications, and we are taking strides to ensure your transition is an easy one. We provide keyboard shortcuts so users who are more comfortable with the speed of the keyboard will feel at home. We've added an important Mail Merge feature, which allows users to send faxes, e-mails, or letters to everyone in their database. We're also addressing the need to co-exist with legacy applications by incorporating the MasterSoft® filter technology, which enables Pages to provide bi-directional conversion for other word-processing applications, including FrameMaker™ (MIF), Ami Pro™, Word™, and WordPerfect™.

Pages provides full support of all NEXTSTEP environment functions, such as drag and drop, cut/copy/paste of objects, WYSIWYG display, multiple open windows, full color support, and NeXT-compatible output device support.

Customizable application

As a NEXTSTEP productivity application, Pages is designed to live in a world of mission-critical custom applications (MCCAs) and vertical market segments. Making heavy use of NEXTSTEP's object-oriented technology, Pages can be factored, modified, controlled and extended in a variety of ways. This allows customers to make Pages a key or supporting component of the MCCA desktop environment, while deriving the



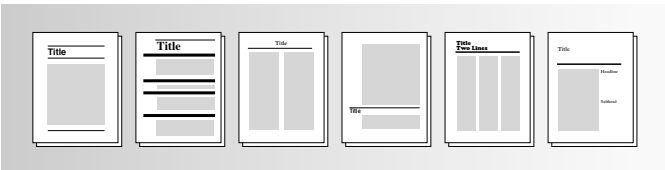
benefits of Pages' powerful document processing capabilities.

What does this mean to customers deploying a NEXTSTEP desktop?

- It means that they can use Pages to create a variety of documents that all automatically adhere to corporate or government design specifications.
- It means that an MCCA hooked to a database can integrate with Pages through our API and advanced Mail Merge feature to automatically generate directories, automated correspondence, and reports.
- It means that a document assembly application can use Pages to put together complex legal or professional documents, merging essential content with required format.
- It means that customers can eventually use Pages itself as the foundation for an MCCA, customizing it, configuring it, and adding new functionality to meet their needs.

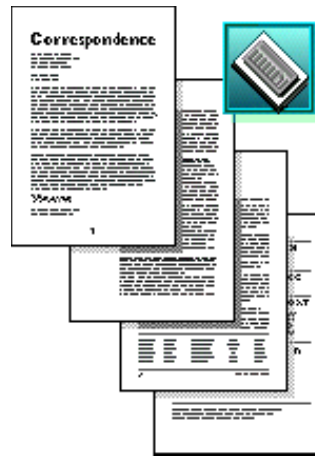
Our advanced feature-set gives Pages an unparalleled fit as an easy-to-use and adaptable productivity application that can be deployed with and work with mission-critical custom applications.

Improves productivity and controls document design



What makes us different – and better – than our competitors is our pre-defined page layout and design technology embedded in Design Models – a unique Pages product that defines the look and feel of your organization's documents.

Every document you create with a particular Design Model adheres to the same rules and maintains a consistent look. You don't have to spend hours, or even days, setting up elaborate stylesheets, because the Design Models take care of so much of this for you.

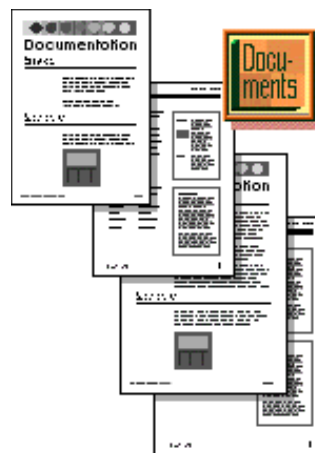


Correspondence™ general purpose Design Model

than competing word-processors and desktop publishing packages. Pages lets you maintain consistent and effective document output.

Consider how Pages can improve productivity. With Pages you have a much shorter learning curve because it's so intuitive. A user can just click on pictures of the style and drag an icon to lay out a page. Or, in a very structured environment, the user can use templates to eliminate the need to choose styles.

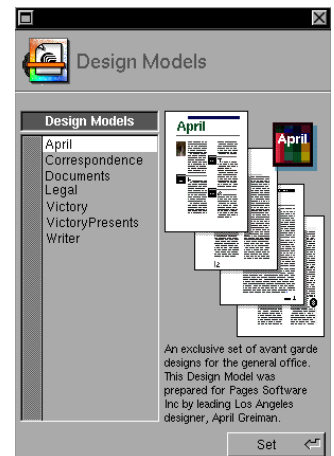
Pages' Design Models will ensure that documents created by people in your



Documents™ Design Model designed for the special needs of software and technical documentation.

In fact, a Design Model can be tailored for your unique company requirements. Design Models define one or more styles for every design element used in a document: typefaces, column layout, graphics, headers and footers, and so on.

In a nutshell, you provide the copy, and Pages Design Models make sure it looks good and communicates effectively. As a result, users can work faster and produce consistently higher quality documents in much less time



A variety of Design Models available

organization are effective and adhere to the same design. Document consistency will give your business a more professional, confident image. Your documents will be more effective in how they communicate because Pages is designed with attractive layouts and text emphasis tools for better reader retention.

Pages will also provide the ability to create corporate Design Models, which will adhere to your corporate standards, with the Pages Designer Toolkit™ available in the first half of 1995.

Feature List for Pages 1.5

Architecture

- Design elements (such as headlines, columns, tables, graphics) all are objects
- Object-link compatible
- Support for short, easy documents as well as long, complex documents
- Full support of NEXTSTEP 3.1+
- Multiple Architecture Binary (MAB) support

User interface

- Moveable Palette, with tear-off tool bars
- Various page display arrangements, including single page, facing pages, and multiple pages

Mail Merge



- Allows users to send faxes, e-mails, or letters to everyone in your database
- Automatically generates directories, automated correspondence, and reports

Documents

- Unlimited pages, sections, and stories per document
- Document management system with thumbnail representations for quick document re-arrangement
- Letter, legal, A4, overhead, and 35mm slide page sizes, in portrait and landscape orientations

- Multiple levels of Undo/Redo

Design Models

- Five Design Models with shipping release

Lists

- Support for bulleted and numbered lists, and TOC leaders

Templates

- Pre-defined and user-defined templates
- Network or local distribution

Import/export of text

- Export text to ASCII, RTF, and PostScript
- Import and export text from ASCII, RTF, RTFD, FrameMaker(MIF), WordPerfect, WriteNow, Word, and Ami Pro

Graphics

- Ability to import EPS and TIFF graphics
- User-selectable text wrap around graphics, frames

Object manipulation

- Ability to add decorative borders to objects
- Object linking to other NEXTSTEP applications

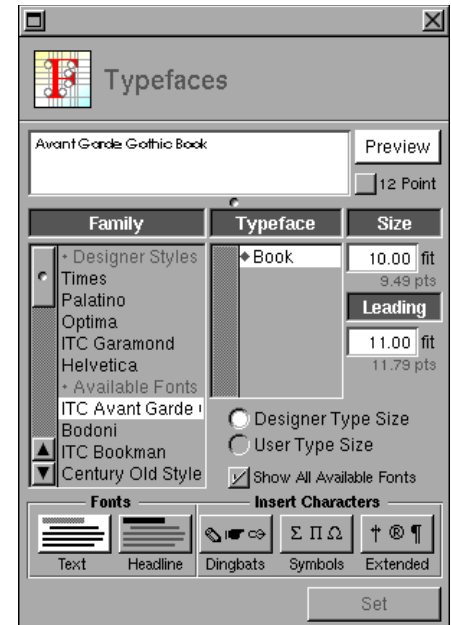
Layout

- Display column guides, grid lines, text symbols
- User-selectable units, including points, picas, inches, centimeters, ciceros, or didots

Color and fills

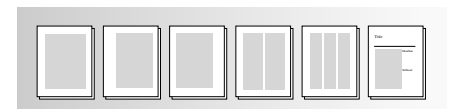
- Ability to apply color to titles, heads, text, background, headers, footers, graphics, borders, and more

Typographic functions



- Adjustable size, leading
- Automatic kerning
- User-selectable text justification
- Full support for the ISO Latin-1 character set
- Text emphasis includes underline, strikethrough, super- and subscript, bold, italic, and more
- Widow control
- Automatic application of drop caps
- Case change; all caps, lower caps, small caps, initial caps

Columns



- Unlimited number of columns (based on Design Model)
- Automatic and manual column breaks
- Book or magazine flow

Headers and footers

- Ability to set up and edit text fields with variables

Footnotes

- Automatic re-numbering

Documentation, help, and tutorial

- Getting started tutorial and full, task-oriented user manual
- On-line context-sensitive help system
- On-line "Resident Expert" information for Design Model help

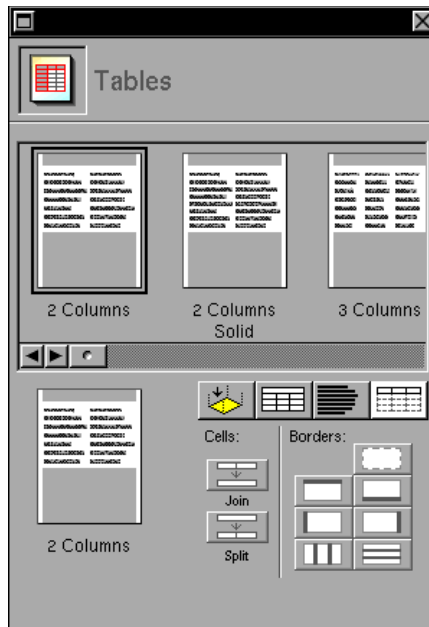
Tabs



- Left, right, centered, and decimal
- Full style editing of tab types and positions

Hyphenation

- Automatic hyphenation control with exception words



Tables inspector with the Joining-Splitting / Borders sub-panel displayed

Tables

- Ability to copy tab-delimited data from other spreadsheets
- Dynamic layout and manipulation of table elements
- Ability to join, split, and grow cells

Auto numbering

- Automatic numbering of sections, and chapters
- Automatic page numbers across sections, or documents

Printing

- Supports all NeXT-compatible output devices, including image-setters, film recorders, third-party PostScript printers



Products and Pricing

Pages 1.5	\$595.00
Eval Unit (45 day time-bomb)	\$ 19.95
Educational Version	\$195.00
Educational 1.5 Upgrade	\$ 49.00
New Design Models	\$ 99.00

Site licensing available

*Prices do not include tax
and shipping
Subject to change without notice*

System Requirements

Pages 1.5 runs on NEXTSTEP 3.1 or higher, with a minimum 20MB of hard disk space, and 16MB of RAM. For NEXTSTEP for Intel platforms, 1024 X 768 or greater resolution is recommended, with a minimum 20MB of hard disk space, 16MB of RAM.

Contact info@pages.com for more information.

© 1994 Pages Software inc. All rights reserved. Pages by Pages, ObjectBased, Design Models, and Designer Toolkit are trademarks of Pages Software Inc. NeXT, NEXTSTEP, and OPENSTEP are trademarks or registered trademarks of NeXT, Computer Inc. in the U.S. and other countries. All other trademarks mentioned belong to their respective owners.

How to contact us

Pages Software Inc
9755 Clairemont Mesa Blvd.
San Diego, CA 9212

Phone: 619 492-9050
Fax: 619 492-9124
e-mail: info@pages.com