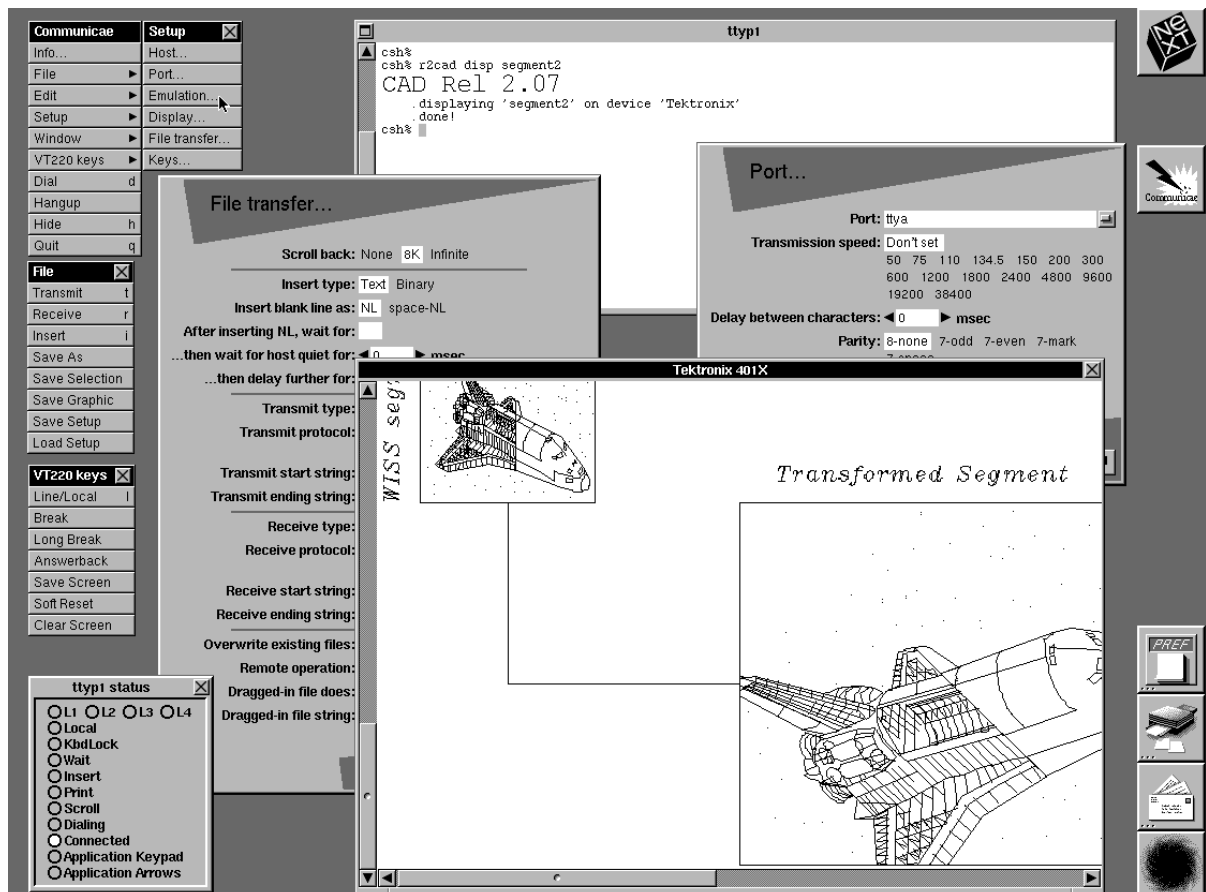


Introducing Communicae™

Communicae is a high-performance communication package for the NeXT Computer System, including both DEC VT220 and Tektronix 4010/4014 terminal emulation, as well as standard file transfer protocols. It can be used as a virtual terminal logged in to the NeXT Computer System itself, or to log in to information services and mainframe systems which are not connected to an Ethernet. Communicae is ideal whenever serial communications are required.

Even though it is loaded with features, Communicae is easy to use. Just a few of its functions and features are shown in action below.



VT220 Terminal Emulation

Communicae's VT220 terminal emulation enables you to communicate with DEC mainframes and minicomputers, IBM mainframes (via 7171/Series 1 3270-to-VT100 emulator/converter front end, or via the standard Teletype interface) and a host of other information services which support ANSI standard terminals for full screen operation. Communicae can use the serial ports on the NeXT Computer System to talk with remote hosts, or you can use it as a "local terminal" application, to run command shells and programs on your own machine. Of course, Communicae supports *all* documented VT100 features, including adjustable tab stops, host computer setup control, region scroll, US, graphic, and multinational character sets, VT52 mode, full application keypad support, insert/delete line and character, full printer control, 132 column mode, and true double high/wide character emulation.

Tektronix 4010/4014 Terminal Support

Communicae's Tektronix 4010/4014 terminal support enables communication with a wide variety of graphics and CAD mainframe and minicomputer applications. This mode supports zoom and pan scrolling, and can create Encapsulated PostScript (EPS) files from the graphic output which the host displays. These images may be pasted directly into documents in other applications. Tektronix graphic input ("GIN") crosshairs can be manipulated with the mouse.

Function Key Programming

User-defined function keys make it easy to automate an entire terminal session, including (for example) automatic login, file download, and logout, all done with a single keystroke!

File Transfers

File transfers include:

- ASCII text transmission
- XModem-CRC protocol and 1 kilobyte packets
- YModem and YModem-G protocols
- Kermit protocol
- Starname file transfers

Plain text transmissions can be easily set up for unfamiliar hosts, by using options which can:

- Delay text on a per-character or per-line basis, or
- Wait for a handshake character from the host on a per-line basis, or

- Wait until the host finishes its echoing display of any past characters, *then* continue.

Thus, regardless of the host's echo speed, data entry prompt, etc., Communicae can easily keep in sync when transmitting lines of textual data to the host!

Programmable automatic file transfer start/end strings allow Communicae to operate the host computer's file transfer program without you typing anything on your keyboard but the file name. Or, avoid typing altogether: just drag files from the Browser window and "drop" them into Communicae's terminal window to initiate the file transfer!

Host Computer & Convenience Options

Host computer options include differentiating modem dial/hangup from computer login/out and easy switching from one host to another, automatically dialing and logging in and out. Convenience options include a special "IBM extended" character set that makes communications with IBM-PC-based bulletin board systems (which often use these characters to draw boxes, lines, etc.) easier to read. Support for a Hayes modem is built in, yet other modems can easily be accommodated, because all support strings are user-definable. Any font can be used for terminal emulation, including a proportionally spaced font, with no loss of terminal cursor positioning, etc.

History Editing

You can edit and save all or part of your terminal session, and auto-retype specified regions of history text, e.g. command lines. Or, cut and paste part of your terminal history into another application. The history can store all incoming characters including escape sequences, or only the text, and can be limited to a fixed size or allowed to grow as needed.

Setup Files Editable

Host computer setups are maintained as standard text files, allowing other programs and embedded applications to create or modify any setup, then start up Communicae with the newly created settings.

Communicae has a suggested retail price of \$395.